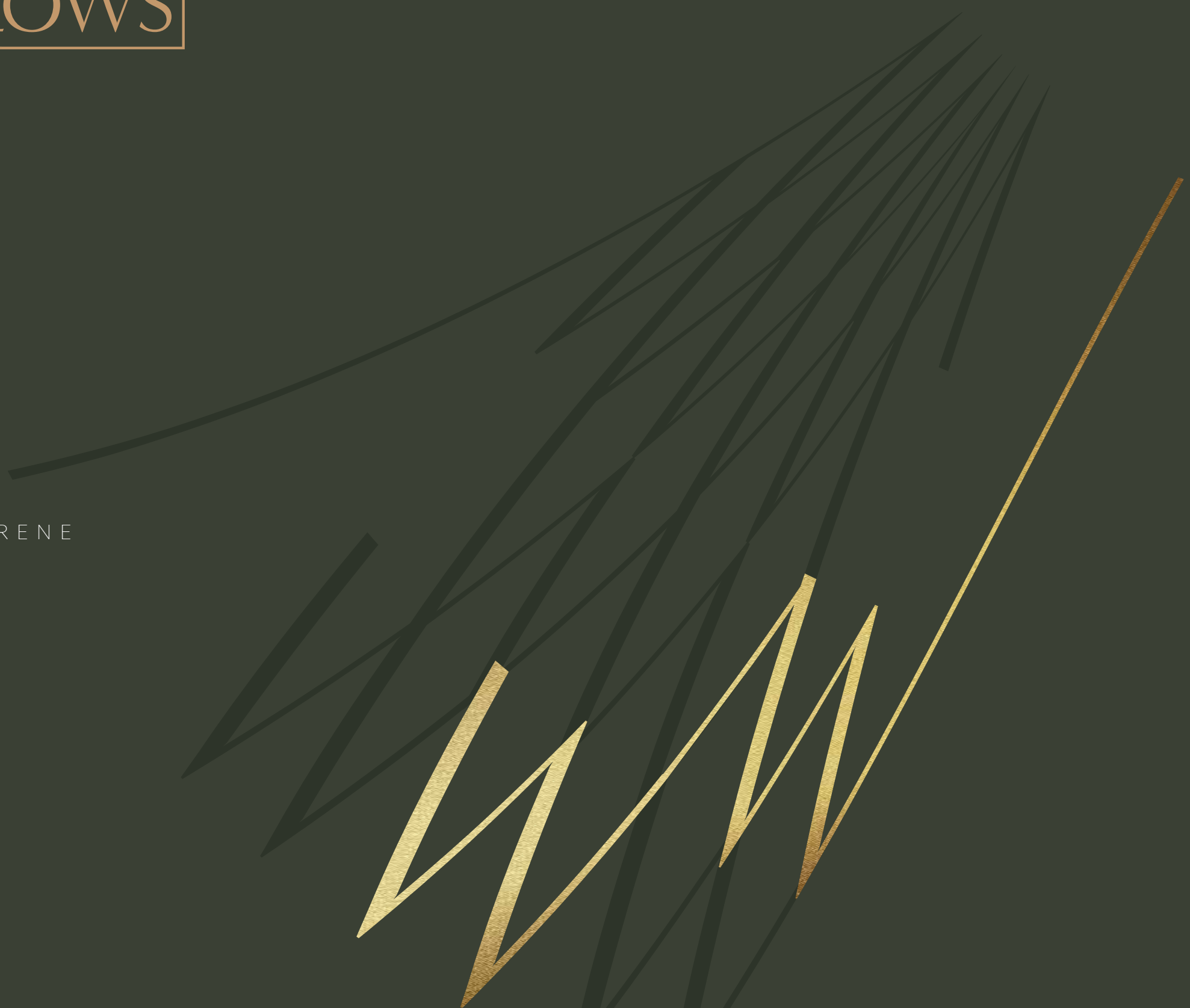
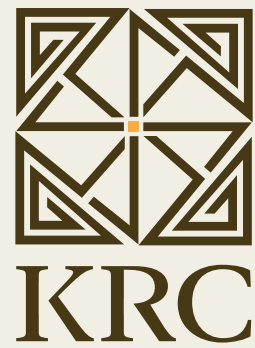


KRC

WHISPERING
WILLOWS

AMIDST SERENE
LIVING.





Kindle Regalia Comfort

Lifestyle

Uber-luxury meets legacy at KRC, where four decades of excellence have redefined affluent living with impeccable craftsmanship. Each property is a celebration of lifestyle, blending our signature aesthetics into the architectural fabric. Embrace the timeless allure of undiluted opulence and lavish living.



44
YEARS OF
LEGACY



At KRC, we believe that home is more than just a place to live—it's a sanctuary where memories are made, dreams are nurtured, and every moment is filled with warmth, comfort, and a sense of belonging. For over 44 years, we have been dedicated to crafting exceptional homes and spaces that reflect our clients' highest aspirations, building a legacy rooted in trust, luxury, and impeccable craftsmanship. Every project we develop is a testament to our commitment to providing spaces where our residents can live comfortably, luxuriously, and peacefully. Our journey

from Tirupur to becoming a name synonymous with uber-luxury real estate has been driven by one goal: to deliver homes that allow you to truly experience life. We understand that today's homeowners seek more than just four walls—they want homes that offer privacy, yet encourage community. They want spaces that feel like a retreat from the outside world, at KRC, we take pride in offering exactly that. As we look to expand our presence, our promise remains the same: to continue building homes where relaxation and rejuvenation are part of your everyday life.

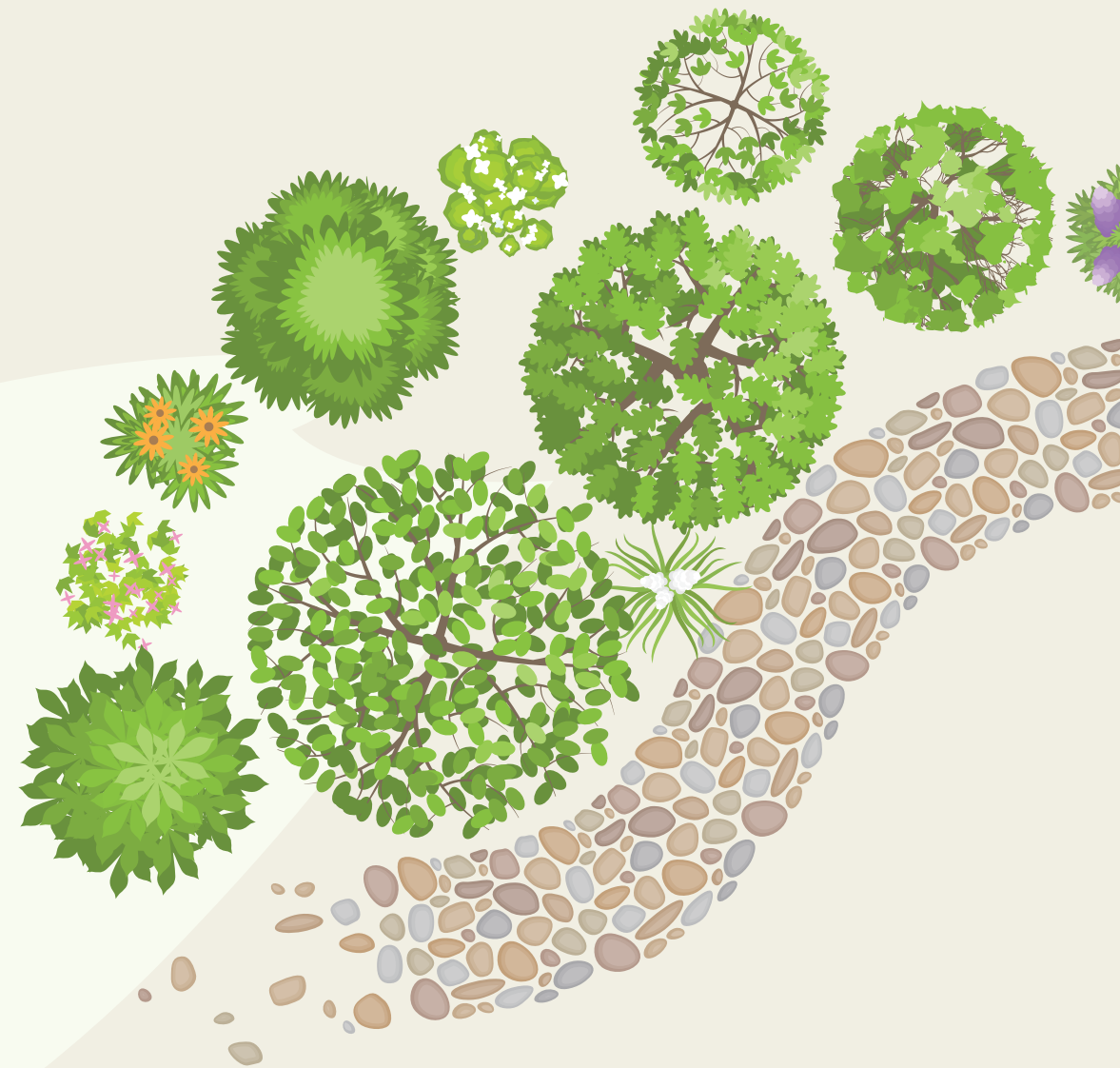
TIRUPUR'S
NEW ADDRESS
OF LUXURY

KRC Whispering Willows offers an extraordinary living experience in **Tirupur**, designed for families seeking a balance of luxury and tranquillity.

Spanning an impressive **38 acres**, this premium township located in **Sembianallur, Avinashi**, is perfect for those who desire to escape the chaos of city life, reconnect with nature, and embrace a lifestyle of peace and luxury. Strategically located off the Avinashi Road Highway (NH-544) and the new four-lane Avinashi-Mettupalayam Road, with close proximity to the Avinashi-Tirupur Junction and Aattaiyampalayam Pirivu Junction, this prestigious township ensures seamless connectivity to Coimbatore and Tirupur's key industrial hubs.

With over **500+ villa plots**, each averaging around **5.5 cents**, Whispering Willows offers ample space, premium amenities, and an environment where serenity meets sophistication.

Nestled near the bustling Avinashi Road Highway, KRC Whispering Willows bridges the dynamic pulse of Tirupur and the industrial grandeur of Coimbatore. Imagine living at the epicentre of India's knitwear and textile hub, seamlessly connected to the "Manchester of South India."





This unique location offers a harmonious blend of urban vibrancy and serene retreat, promising a lifestyle of unparalleled convenience and luxury. At KRC Whispering Willows, your journey from tranquility to innovation is just a breath away.

KRC Whispering Willows captures the serenity of nature, transforming it into a tranquil masterpiece. This sophisticated project boasts a peerless array of features, including a meticulously planned central avenue, restful pavilions, expansive parks, jogging trails, and zen gardens.

As a vast creative canvas, KRC Whispering Willows seamlessly integrates a vibrant mix of carefully crafted greenery and open spaces, embodying elegance and tranquility in every detail.

 **KRC**
WHISPERING
WILLOWS

Design Team Experts of KRC Whispering Willows

Our dedicated team of design experts have brought their unparalleled craftsmanship to every detail of KRC Whispering Willows. From architecture to allied services, each specialist ensures the highest standards of workmanship, blending aesthetics and functionality for a truly luxurious living experience.

Landscape Architecture
Consultant



Rohit Marol
Founder Principal
TERRA FIRMA
Landscape Architecture, Bangalore



Krishna Murthy
Sr. Engineer- Projects
TERRA FIRMA



Deepti Dana Lingham
Associate
TERRA FIRMA

Master Plan Design
& Co-ordination



Mahesh
Principal Architect
Sixth Sense, Coimbatore

Structural Consultant



M. Thangavel
Proprietor,
D BASE CONSULTANTS
Structural Engineers &
Planners, Coimbatore

Electrical Consultant



P. P. Subramanian
P P Associates
Chief Electrical Engineer



M. Mukund
P P Associates
Senior Engineer Projects

Plumbing Consultant



S. Devaraj
Proprietor
D&D Consultancy, Coimbatore

Lighting Consultant



P. Senthil Kumar
Chief Lighting Consultant
Anoora Energy Concepts Pvt Ltd,
Coimbatore, K-Lite Authorised Dealer



At Terra Firma – a design practice specialising in landscape architecture, we are committed to crafting landscapes that integrate seamlessly with the built environment, elevating both aesthetics and functionality for the community.

As the Founder & Design Principal, at Terra Firma, I have been associated with the KRC group on several landmark projects. KRC has consistently endeavoured to build and deliver high quality living spaces for discerning customers.

KRC Whispering Willows being a premium township project in Tirupur, developed across 38 acres of land, has given us an opportunity to create a cohesive landscape design that will enhance the residential experience while promoting environmental sustainability. The layout is generously planned with active and passive recreational open spaces such as play zones, reading nooks and shaded corners with appropriate site furniture intended to relax, rejuvenate and destress oneself and provide an opportunity to reconnect with Nature. It is also designed to bring the community together by fostering social interaction and enjoy the quality time spent outdoors.

The township has been designed thoughtfully to create a vibrant community setting with abundant greenery which every homeowner will be proud of.

Terra Firma is proud to be associated with this project.

Rohit Marol

Founder Principal - Terra Firma, Landscape Architecture

BUILDING A
VISION FOR
TOMORROW

STEP INTO THE
TOWNSHIP
OF THE FUTURE
WITH KRC
WHISPERING
WILLOWS.



A 38-acre marvel of township development. This meticulously planned satellite town features an intricate network of wide roads, ensuring seamless connectivity.

Strategically positioned gates and entry / exit gateways provide easy access. Lush parks, open spaces, and a central avenue invite leisure and relaxation. With well-planned utilities and amenities, Whispering Willows is the epitome of modern living, setting a benchmark in luxury and convenience.





KRC
WHISPERING
WILLOWS

GRAND ENTRANCE PORTAL

KRC
WHISPERING
WILLOWS



MAIN STREET BOULEVARD

Whispering Willows is designed with sustainability at its core, featuring rainwater drains, drip irrigation systems, and an extensive green cover of over

3,000
TREES





CENTRAL PLAZA



BLENDING
URBAN
EXCITEMENT
WITH
SERENE
LUXURY

Delight in bespoke experiences at KRC Whispering Willows' intricately curated amenity deck, where sophistication intertwined with tranquility. Stroll through the serene Orchard Walk, relax under the Pergola with climber cover, or enjoy the scenic Meandering Walk. Each contour within its architectural fabric eloquently mirrors nature's rolling terrain.

Find solace in seating corners and resting pavilions, while the Pet Park and Multi-purpose Community Garden cater to diverse interests. The Senior Citizens Corner and Rain Garden add to the peace, ensuring every resident finds their perfect sanctuary amidst nature's embrace.



Central Park Aerial View I

The Central Park offers a variety of thoughtfully designed amenities, including a Basketball Court, Yoga & Meditation Deck, Outdoor Gym, Reflexology Walk, and a Multipurpose Community Garden. These spaces provide the perfect environment for active play, fitness, and relaxation. Surrounded by lush greenery, it's an ideal spot for residents to unwind, stay active, and connect with nature.

Central Park Aerial View II

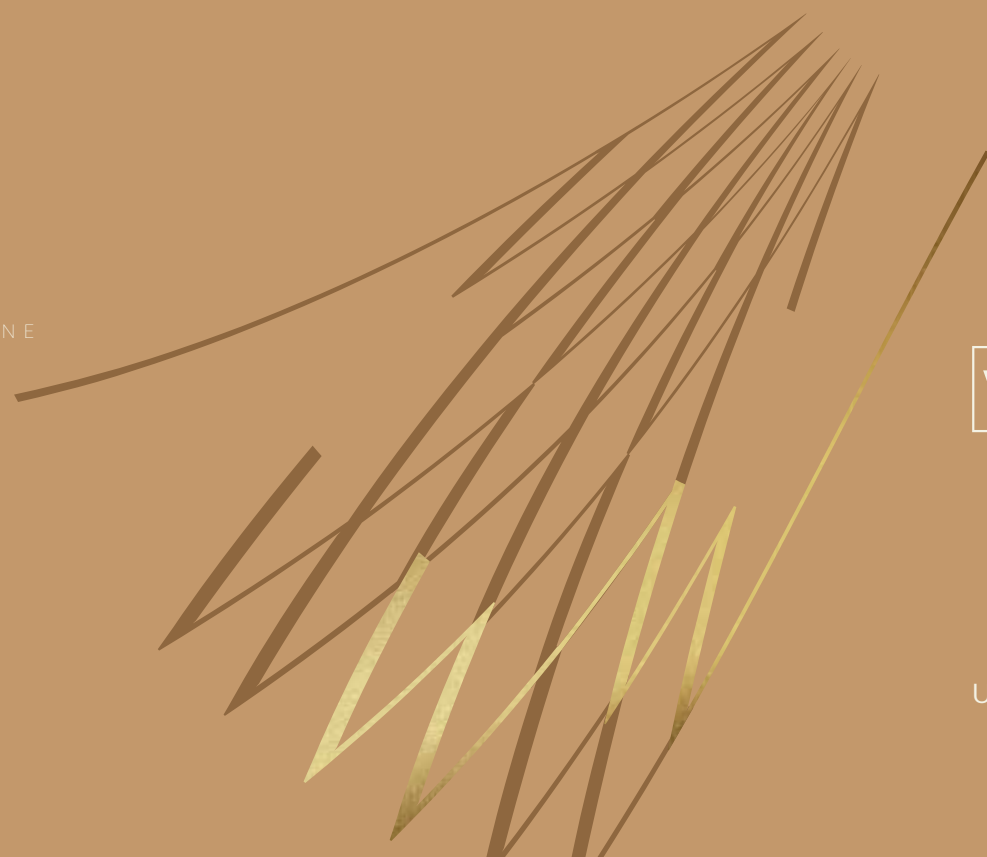
The Kids Play Area and Pet Park are designed to cater to the entire family. The vibrant Kids Play Area offers a safe, engaging environment for children to explore and have fun, while the Pet Park provides ample space for pets to run and play freely. Together, they create a joyful and inclusive atmosphere for all family members.

EXPERIENCE
AN OASIS OF
OPULENCE

KRC Whispering Willows captures the serenity of nature, transforming it into a tranquil masterpiece.

This sophisticated project boasts a peerless array of features, including a meticulously planned central avenue, restful pavilions, expansive parks, jogging trails, and zen gardens. As a vast creative canvas, KRC Whispering Willows seamlessly integrates a vibrant mix of carefully crafted greenery and open spaces, embodying elegance and tranquility in every detail.

AMIDST SERENE
Living.



KRC
WHISPERING
WILLOWS

Unfold Whispering Willows Stunning Vision! 



PLUG &
PLAY
INTO LIFE

KRC Whispering Willows offers over 500+ meticulously planned plots averaging 5.5 cents, embracing the innovative Plug and Play model. Each plot is fully integrated with essential infrastructure, including water supply, electricity, and sewage systems, ensuring immediate construction readiness.

This modular approach swiftly transforms spaces and effortlessly blends with the existing amenities and landscapes. Experience the magic of intelligent, eco-friendly, imaginative, and transformative spaces.

KRC
WHISPERING
WILLOWS

AERIAL VIEW

KRC
WHISPERING
WILLOWS

KIDS PLAY
AREA &
PET ZONE



At KRC Whispering Willows, the Kids Play Area & Pet Zone is thoughtfully designed to bring joy and comfort to the entire family. Children can enjoy a safe, vibrant space filled with fun activities, while the pet zone ensures your furry companions have plenty of room to play, ensuring a harmonious, family-friendly community.

LIFE IN THE
OUTDOORS

KRC Whispering Willows is a paradise for sports enthusiasts and outdoor lovers, offering a vibrant space designed to inspire an active lifestyle. Whether you prefer a refreshing jog, an energizing workout session, or a friendly game, there's something for everyone. Each facility is thoughtfully integrated into the lush natural surroundings, creating an invigorating environment that promotes fitness, wellness, and recreation.

At KRC Whispering Willows, the outdoors become your ultimate playground for a healthier, more fulfilling lifestyle.







JOURNEY

INWARDS

KRC Whispering Willows offers serene spaces designed for reflection and rejuvenation. Immerse yourself in the tranquil Quiet Scent Gardens or find inner peace in the Zen Garden.

The Yoga Deck and Meditation Deck provide perfect sanctuaries for mindful practice, while the Reflexology Garden offers a unique way to unwind and revitalize. Each space is thoughtfully crafted to promote wellness, ensuring a harmonious balance between mind, body, and spirit.

KRC
WHISPERING
WILLOWS

SPORTS PARK



ACTIVE LIVING SPACES

At KRC Whispering Willows, residents can enjoy a host of well-planned outdoor amenities, including a walk/jogging trail, resting pavilions, and a futsal court. The access pathways provide easy movement throughout the community, while the stepped seating and maidan offer perfect spots for relaxation and socializing. Surrounded by lush planting, every space is designed for leisure and enjoyment amidst nature.

SPORTS PARK

- ① ACCESS PATHWAY
- ② RESTING PAVILION
- ③ MAIDAN
- ④ STEPPED SEATING
- ⑤ FUTSAL COURT
- ⑥ PLANTING
- ⑦ WALK / JOGGING TRAIL



 **KRC**
WHISPERING
WILLOWS

FEATURES



Rainwater Collection and Recycling

With 38 acres, rainwater is collected, harvested into **4 open wells**, and recycled, promoting sustainability and water conservation.



Grand Entry Portal and Arrival Pavilions

A stunning grand entry portal with modern architectural pavilions welcomes residents, offering a striking first impression of luxury.



Avenue Tree Planting

Beautiful avenue tree planting lines the roads, enhancing the green cover and providing a serene, nature-filled environment.



Periphery Compound Wall

A secure compound wall surrounds the entire campus, ensuring privacy and safety, with the exception of road-facing areas.



24/7 Security and CCTV Surveillance

The campus offers 24/7 security with solar-powered CCTV cameras at key entry points and public areas for complete safety.



Shop Site Spaces

Designated shop site spaces within the township provide convenient access to essential retail services, enhancing residents' daily lifestyle.



CENTRAL PARK

AMENITIES :

(PARK - 1)



Walkways in Central Park.



Yoga & Meditation Area



Reflexology Walk Area



Multi-purpose
Community Garden



Kids Play Area



Pet Park Area



Central Plaza with Seating
and Pergolas with lighting



BasketBall Concrete Court
with Flood lighting



Jogging Trail Around
Central Park



Outdoor Gym space



Trees and Planting in
Central park spaces



Resting Pavilion
Gazebos with seaters

SPORTS PARK

AMENITIES :

(PARK - 2)



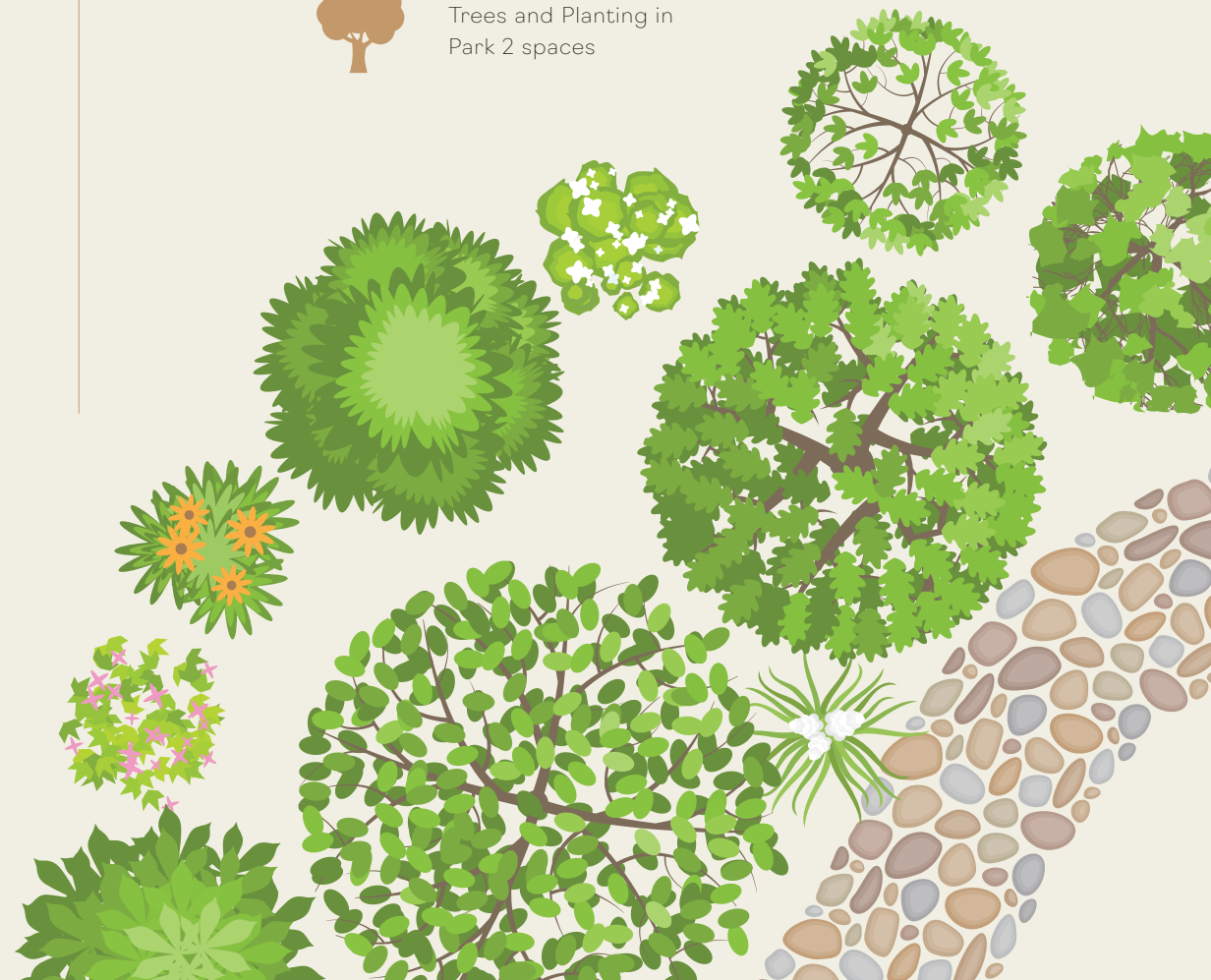
Futsal Turf Court
with lighting



Maidan multi utility space
with Seaters & lighting



Trees and Planting in
Park 2 spaces



KRC WW SPECIFICATIONS



INFRASTRUCTURE

ROADS AND PATHWAYS



60ft, 40 ft, 33 ft, & 30 ft wide Internal Roads with concrete pedestrian pathways and tree planting on either side, carriageway laid with bituminous asphalt driveways.



23ft wide internal roads with carriageway laid with Concrete Paver driveways with tree planting on either side.



Each Plot has a defined access from the approach road.

PLUMBING



UG Stormwater Drain RCC Trench



Sleeve Pipe Provision given for Rainwater pipes to be connected from plot to Stormwater Trench.



UG Drainage line connection - A Sleeve Pipe provision given for Waste water (Grey water) direct connection & for soil water overflow connection.



UG Drainage RCC Manhole Chambers in roads.



OHT and UG sump of suitable capacity



Water Supply PVC Pipe Main lines to carry Borewell /domestic water with Upvc branch lines upto plots



Borewell Water Supply PVC Pipe Main lines to carry Borewell water with Upvc branch lines upto plots.



Drip Irrigation line System for Avenue landscape and Garden Areas.



Plumbing lines will be terminated within plots for water supply and sewerage.



ELECTRICAL



LED Street lighting for roads and public spaces.



Landscape lights designed to enhance hardscape and softscape.



Underground Power lines to distribute power from transformer yards to individual feeder pillars.



Sleeve Pipe (provision only) for Cable Entry from Plot to Electrical Trench upto Feeder Pillar.

WATER SUPPLY



Borewell water supply provided.



NTADCL (L&T water) 24x7 Metered Supply*



Water supply network from OHT to individual plot through PVC Main lines and Upvc branch lines.



OHT and UG sump constructed of suitable capacity.



Separate Domestic Water PVC pipe Main lines and Upvc branch lines upto plots (pipe provision only).



Drip Irrigation lines System for Road side Avenue tree planting and park spaces tree planting.

* Disclaimer - The supply is on chargeable basis

Whispering Willows - Location Significance



AVINASHI HIGHWAY
(NH544)
5 Mins



AVINASHI TO
METTUPALAYAM
4 LANE HIGHWAY
500 Mtrs



SRI SENTHUR
MAHAL
500 Mtrs



AVINASHI TIRUPPUR
JUNCTION
10 Mins



COIMBATORE
AIRPORT
35 Mins



TIRUPUR RAILWAY
STATION
25 Mins



IT SEZ
Tidel Neo Park:
15 Mins



NETHAJI APPAREL
PARK TIRUPPUR
15 Mins



COLLEGES

PSG iTech : 25 Mins
PSG CAS : 35 Mins
Dr. GRD College of Arts and Science : 35 Mins



HOSPITALS

CNS Super Speciality Hospital : 10 Mins
Royal Care Super Speciality Hospital : 25 Mins
Kovai Medical Center and Hospital : 30 Mins



SCHOOLS

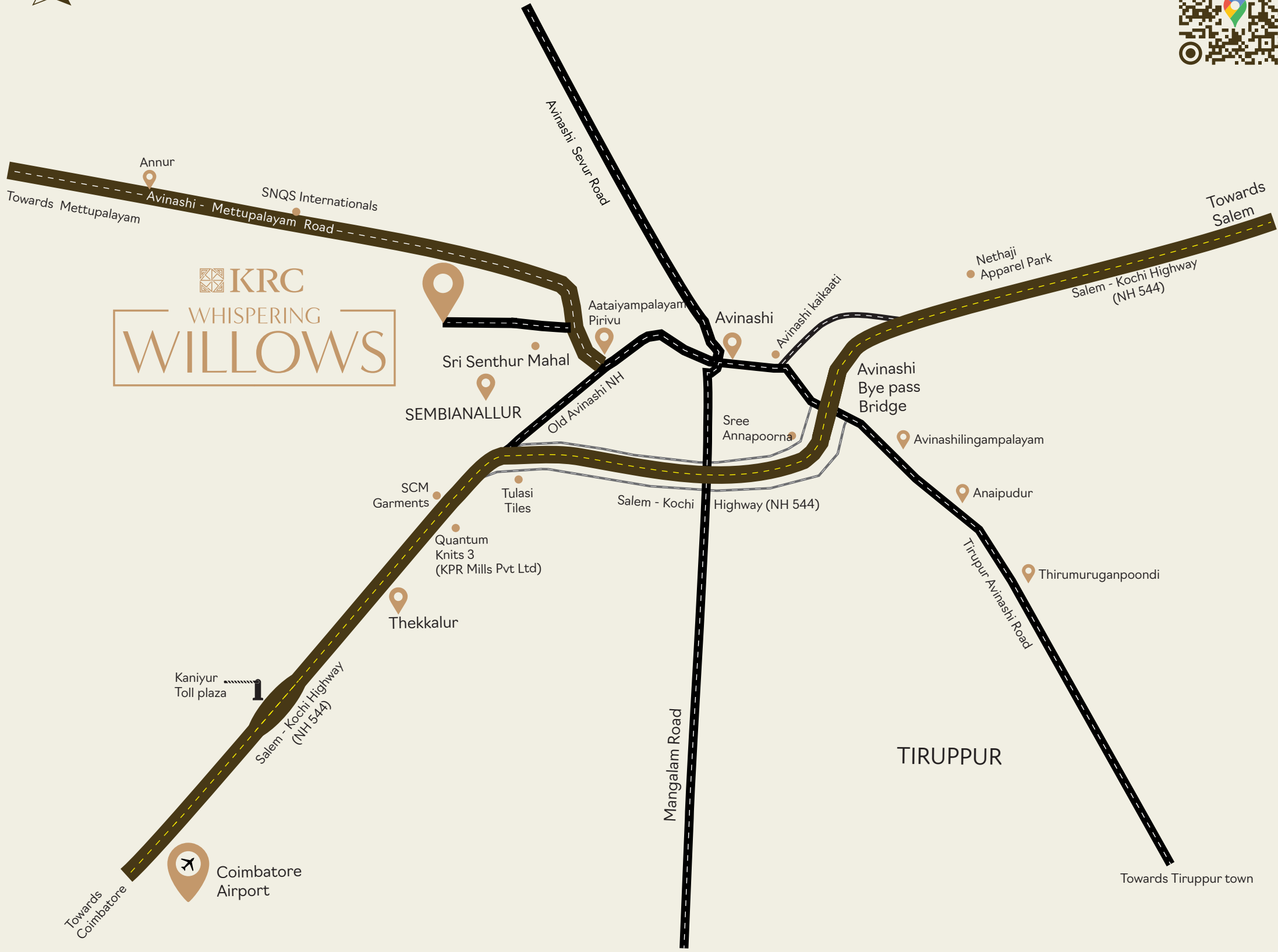
Sri Nachammal Vidyavani CBSE Senior Secondary School : 5 Mins
Bharathi Vidhya Kendra ICSE School : 10 Mins
The Quest International School : 12 Mins
AKR Academy (CBSE) : 14 Mins
Spring Mount Public School : 15 Mins
T.E.A. Public School : 15 Mins
Smart Modern School : 20 Mins
AVP Trust School : 20 Mins
SKL Public School : 20 Mins
Indian Public School, Kovilpalayam : 40 Mins



HOTELS & RESTAURANT

Sree Annapoorna : 10 Mins
Sree Haribhavanam : 10 Mins

Whispering Willows - Location Map





KRC Whispering Willows

"All of nature begins to whisper its secrets to us through its sounds.
Sounds that were previously incomprehensible to our soul now
become the meaningful language of nature."

-Rudolf Steiner

Join the Whispering Willows Community
- Enquire Today!

LAYOUT APPROVAL INFORMATION (RERA APPROVED)

✔ DTCP APPROVAL NO: 35/ 2024

✔ RERA APPROVAL NO: TN/32/LAYOUT/3880/2024 | WWW.RERA.TN.GOV.IN





REGD. OFFICE: No.7, Gandhi Nagar,
3rd Street, Tirupur - 641 603, India
T : 0421 4974311 | W : krchousing.com



Property Location: KRC Whispering Willows,
Nathampalayam, PO, Sembianallur,
Avinashi, Tirupur Dist. Tamil Nadu - 641 654.

FOR ENQUIRY CONTACT

98946 44311

enquiry@krchousing.com



E-BROCHURE



****Disclaimer:****

This brochure is intended for conceptual purposes only and does not constitute a legal offering. The promoters reserve the right to modify, alter, add, or remove any specifications or amenities mentioned. The features and amenities depicted in the project are indicative and for visualization purposes only. The project/ layout plans are subject to approval by the Tirupur Corporation/Local Planning Authority.